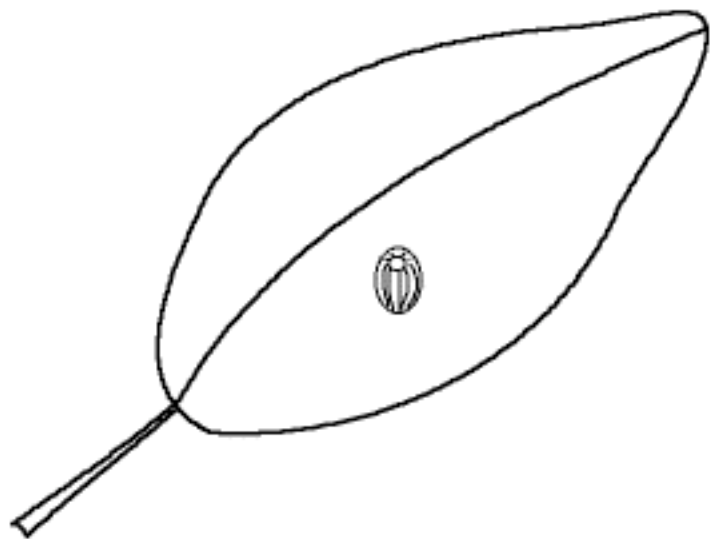




Life Cycle  
of a  
Butterfly

By \_\_\_\_\_

Tiny butterfly eggs are usually laid on the underside of a leaf.



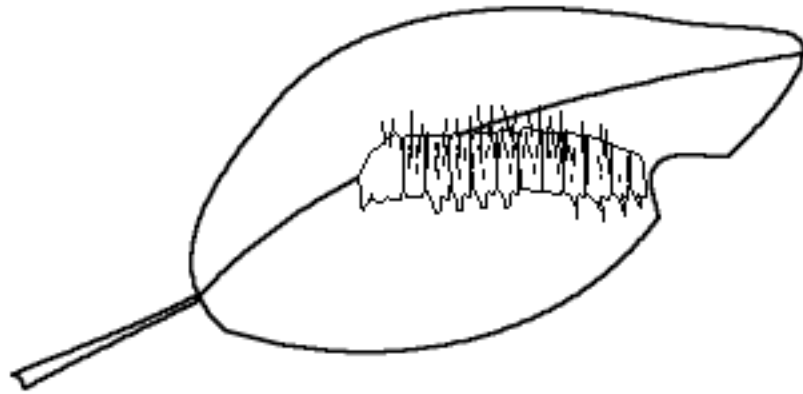
**This is an egg.**

---

---

---

A tiny larva, called a caterpillar, hatches from the egg. It eats leaves and molts (sheds its skin) many times as it grows.



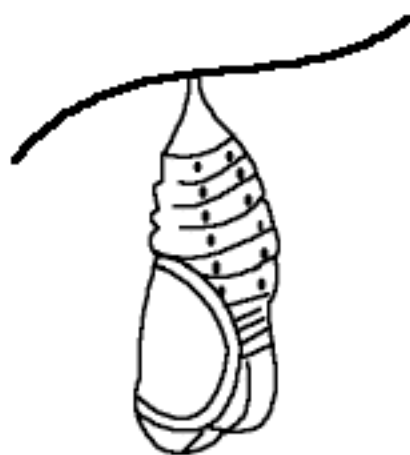
**This is a caterpillar.**

---

---

---

When it has grown  
enough, the caterpillar  
turns into a pupa (also  
called a chrysalis).



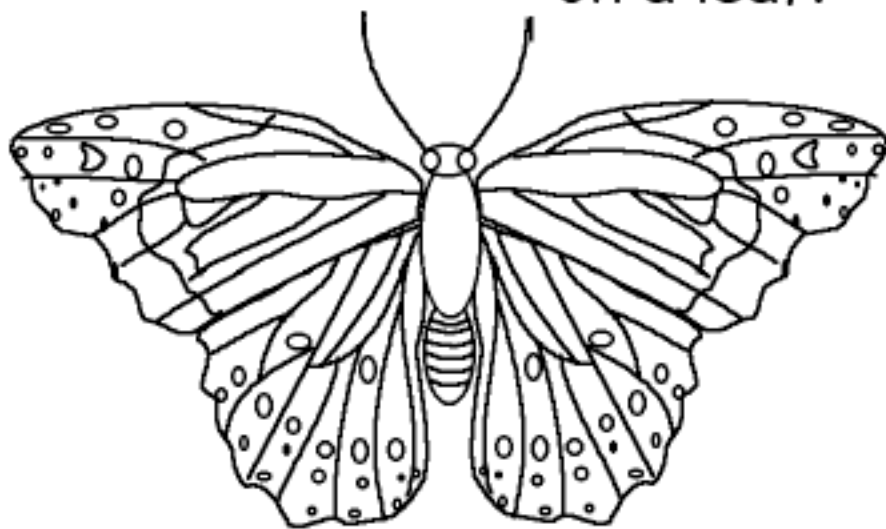
**This is a pupa.**

---

---

---

A fully-grown adult  
emerges from the pupa.  
It will soon mate and then  
the female will lay eggs  
on a leaf.



**This is the adult.**

---

---

---